

Governing Big Coops Through Crisis

ICC's Bryan Pagan & BSC's Cyn Macias-Gomez

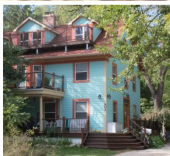


Inter-Cooperative Council at Ann Arbor

- The ICC is a 501(c)(3) non-profit housing corporation that provides cooperative housing to students
- Started in 1932 as the Michigan Socialist House, members paid \$2 a week for room and board
- In 1937, adhering to the Rochdale Principles, the Michigan Socialist House, Michigan Wolverine Eating Co-op, Rochdale Cooperative house & Girls' Cooperative House joined together to form the Campus Cooperative Council
- Currently we serve ~550 members across 16 Houses



Baker



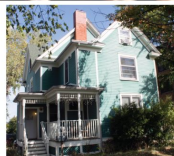
Black Elk



Debs



Gregory



King



Linder



Luther



MichMinnes



Nakamura



Osterweil



Owen



Ruths'



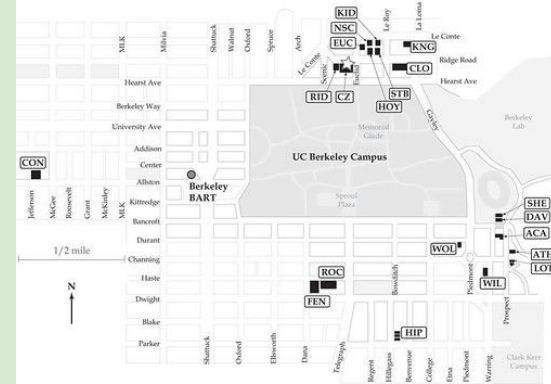
Truth



Vail

Berkeley Student Cooperative


- Our mission is to provide a **quality, low-cost, cooperative housing community** to university students, thereby *providing an educational opportunity for students who might not otherwise be able* to afford a university education.
- The Berkeley Student Cooperative is a 501c3 nonprofit housing cooperative. The BSC provides affordable housing and board to students at UC Berkeley and other Bay Area colleges and universities.
- Presently the BSC has over 1200 student members living in or eating at our seventeen houses and three apartment cooperatives around the UC Berkeley campus.
- Founded in 1933, the BSC is the largest student housing cooperative in the United States.
- Our board consists of about ~30 people
- We have about 30 non-student staff





Problems all cooperatives face





Problems that are particular to large cooperatives

An illustration featuring two hands, one light-skinned and one dark-skinned, holding a branch with green leaves and a red flower. The hands are positioned as if supporting the branch. The background is a light, warm tone. A central green banner contains the text. The artist's signature 'Kengy' is visible in the bottom right corner of the illustration.

What role do we play as co-op leaders?



Examples that we faced in our
cooperatives

WHEN YOU HAVE MORE THAN YOU NEED



Q+ A



BUILD
A LONGER TABLE
NOT A HIGHER WALL